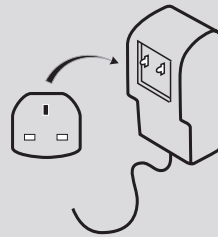


Step 1: Connecting Up your ST-510

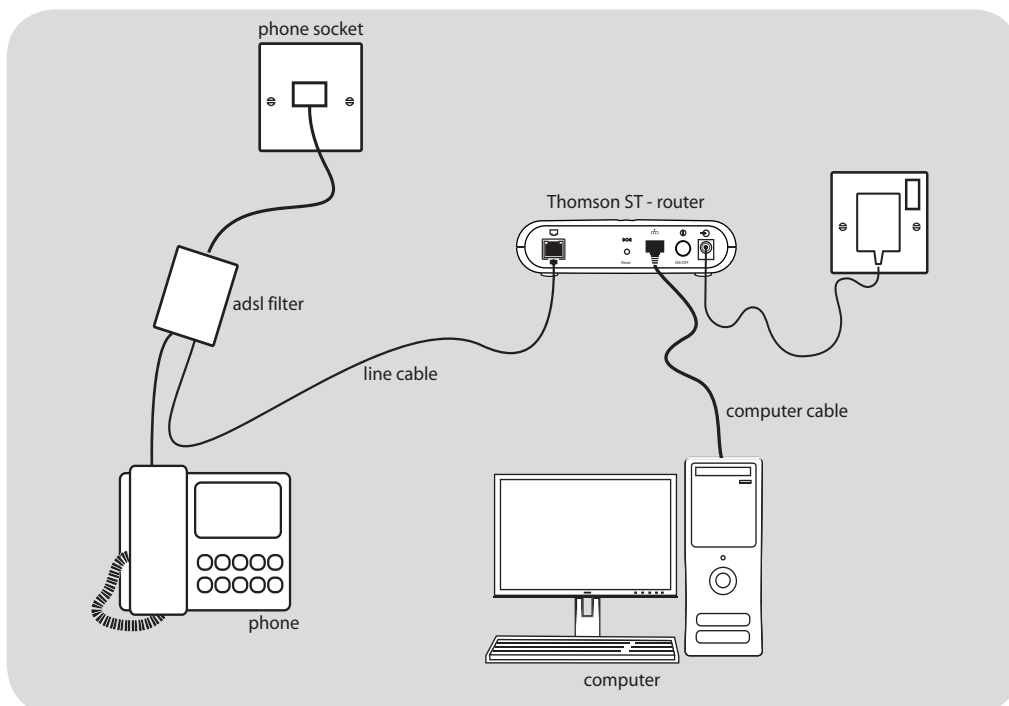
Note: if you currently have a dial-up internet service read troubleshooting tip #1 overleaf before continuing. *T1

If you have been supplied a two-part power supply, clip the pins to the power supply




Connect up as shown below.

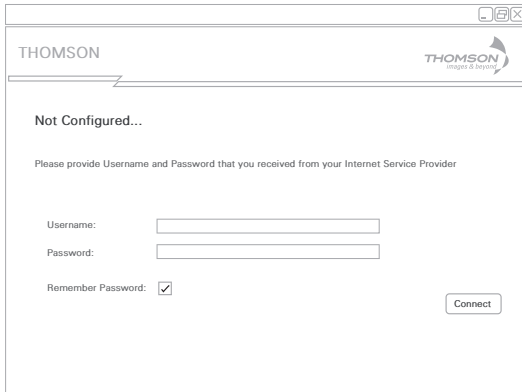
Note: all telephone devices must have an ADSL filter fitted. *T2



When connected correctly the Power, Ethernet and DSL light will be solid green. *T3

Step 2: Configuration & going online

Open your Web browser (Internet Explorer). Your ST-510 will automatically prompt for your broadband username and password. This is provided by your Internet Service Provider. 



THOMSON

THOMSON
images & beyond

Not Configured...

Please provide Username and Password that you received from your Internet Service Provider

Username:

Password:

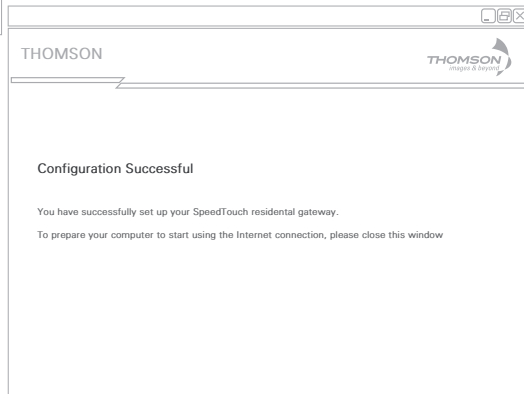
Remember Password:

Connect

Don't forget to include the domain part of your username.
e.g. joe.bloggs@my-isp.co.uk

Your ST-510 will then store your username and password and you will be permanently connected to your broadband service.

The Internet light on your ST-510 will now also be green.







THOMSON

THOMSON
images & beyond

Configuration Successful

You have successfully set up your SpeedTouch residential gateway.
To prepare your computer to start using the Internet connection, please close this window.

TROUBLE SHOOTING

-  **Browser Settings:** Check that your browser (Internet Explorer) settings are correct for your new ST-router: Open Internet Explorer select **Internet Options...** from the **Tools** menu. Then select the **Connections** tab. Select the "Dial-up" option: **Never dial a connection**. Next, select the button **LAN settings**, in the Proxy Server settings ensure the Proxy Server is unchecked. Select **OK** (twice) to save your browser's settings. Continue to setup your ST-router as described in Step 1.
-  **ADSL Filters:** All telephony devices must have an ADSL filter inserted in order for your broadband and phone line to operate correctly. This includes all telephone handsets, fax machines, answering machines, burglar alarm systems and satellite receivers. Additional filters can be purchased through your ISP or online at www.thomsonslshop.com
-  **DSL Light:** The light on your router indicates the status of the link between your router and the local telephone exchange. When connected (Synchronised) the DSL light will be solid green. If the light continues to flash then check a) you have connected everything correctly and have fitted filters to all telephony devices, and b) your broadband service has been activated.
-  **Not Connected?:** If your browser does not display automatically; check you have connected up correctly and that your browser is configured correctly as described above, then enter the URL <http://192.168.1.254> in to your browser's address bar to configure your router.